



Bacup Road, Rossendale

£395 PCM

Want to live in the heart of Rossendale? Then you'll love this super cosy STUDIO flat on Bacup Road.

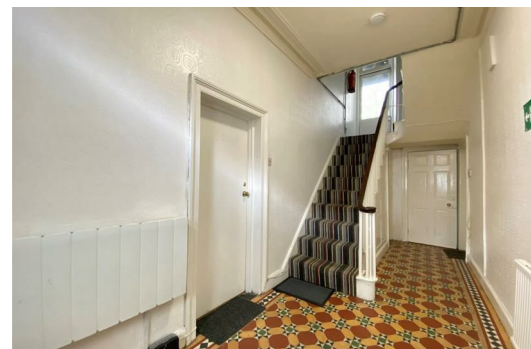
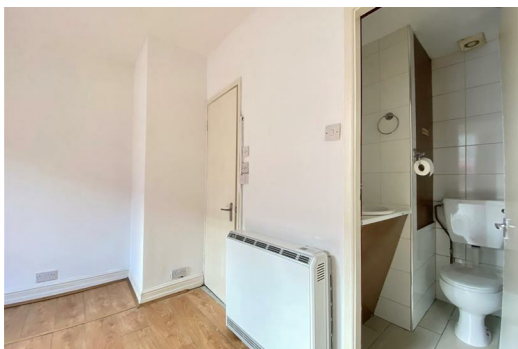
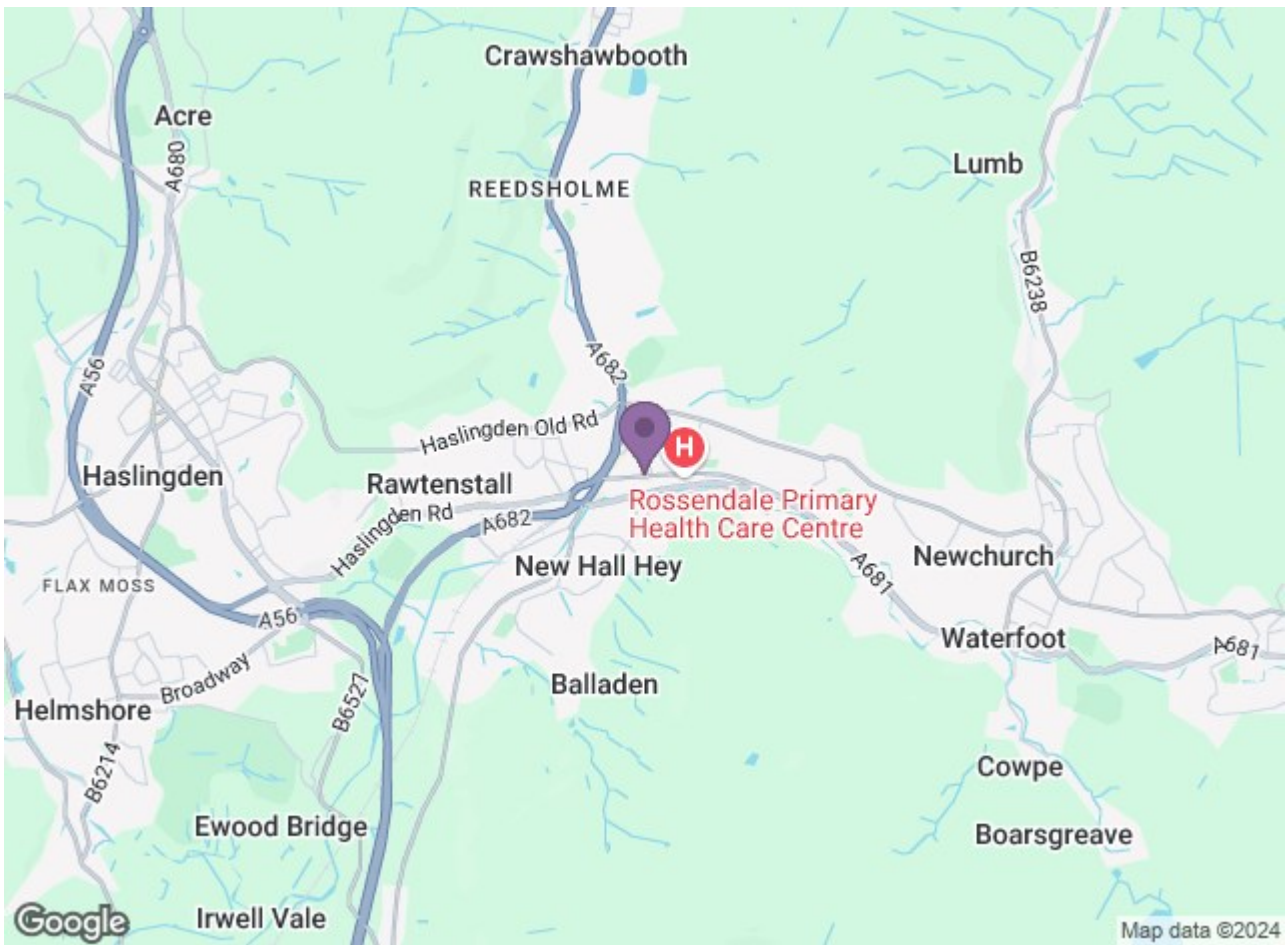
Step inside, and you'll be welcomed into a cosy and warm living/bedroom with a comfortable atmosphere perfect for cuddling up in front of the TV. The kitchen is nice and compact with plenty of worktop space and plenty of natural lighting.

Location wise, this flat is situated in the popular suburb of Rossendale and benefits from an array of local amenities; you'll have a host of retail stores, supermarkets, bars and restaurants right at your fingertips.

Available NOW (subject to application & referencing)  
12 month tenancy.  
Deposit £450.  
Council Tax Band A.







Energy Efficiency Rating			Environmental Impact (CO <sub>2</sub> ) Rating		
Rating	Current	Potential	Rating	Current	Potential
A			A		
B			B		
C			C		
D			D		
E			E		
F			F		
G			G		
	49	54		49	54

England & Wales